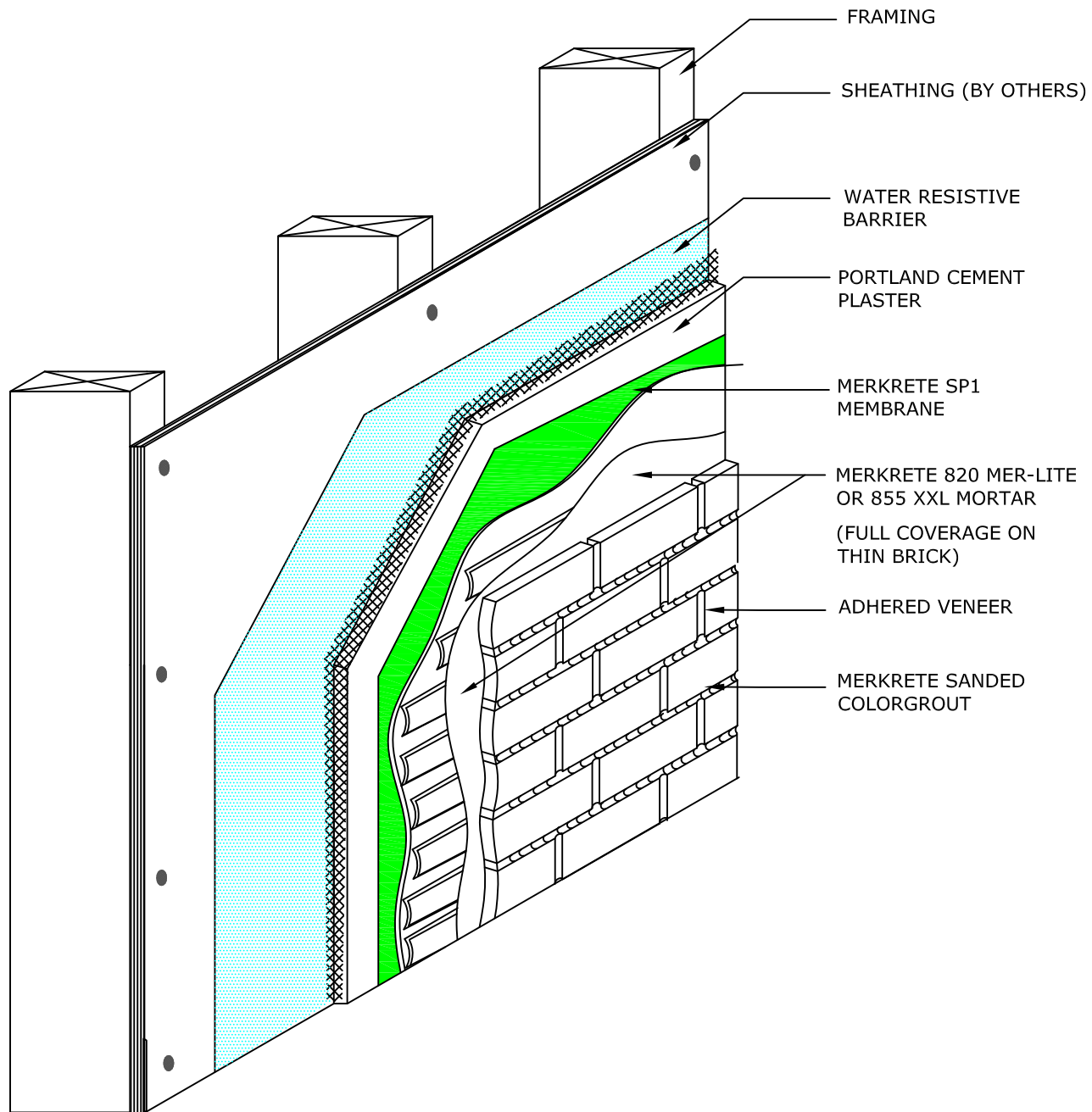


MERKRETE STONE AND BRICK VENEER SYSTEM



SBVS G1.02 FRAMED WALL WITH PORTLAND CEMENT PLASTER

- NOTE:
1. Portland cement plaster is installed in accordance with the applicable Building Code.
 2. When portland cement plaster is used, SP1 is Optional.

Disclaimer: The design, specifications, and construction shall comply with all local building codes and standards. Parex USA installation guidelines are for general information and guidance only and Parex USA specifically disclaims any liability for the use of this design, and for design, engineering, or workmanship of any project. The assembly shall be designed to prevent condensation within the assembly. The designer and the user shall provide final drawings and specifications. Products shown other than those manufactured by Parex USA are shown for clarity of the Parex USA product only. Contact the manufacturer of such other products for installation instructions.